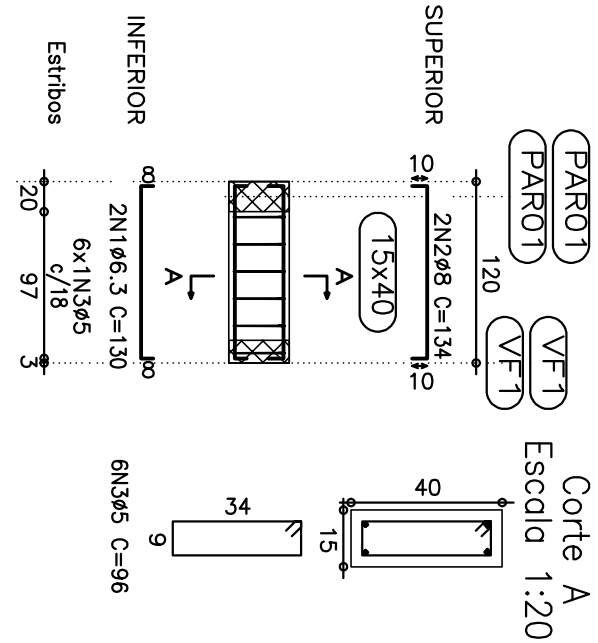
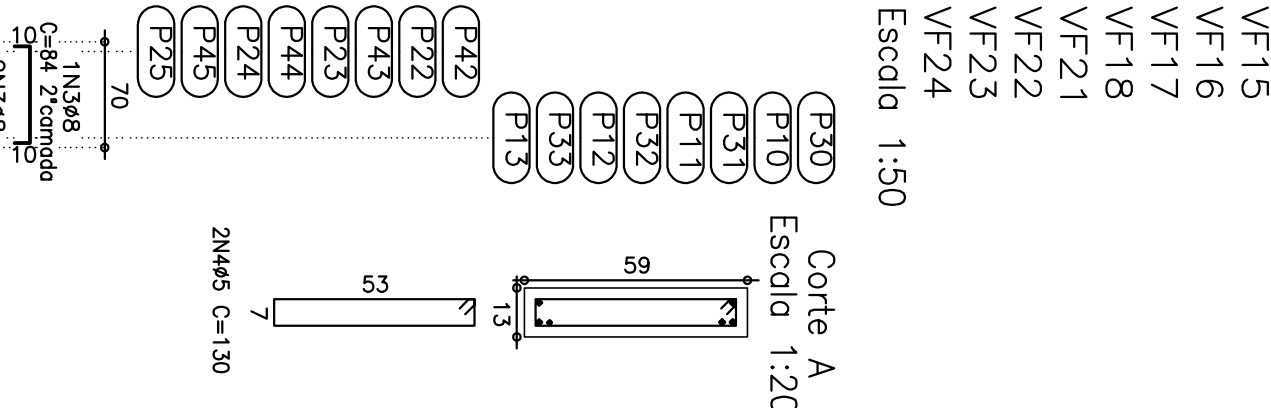
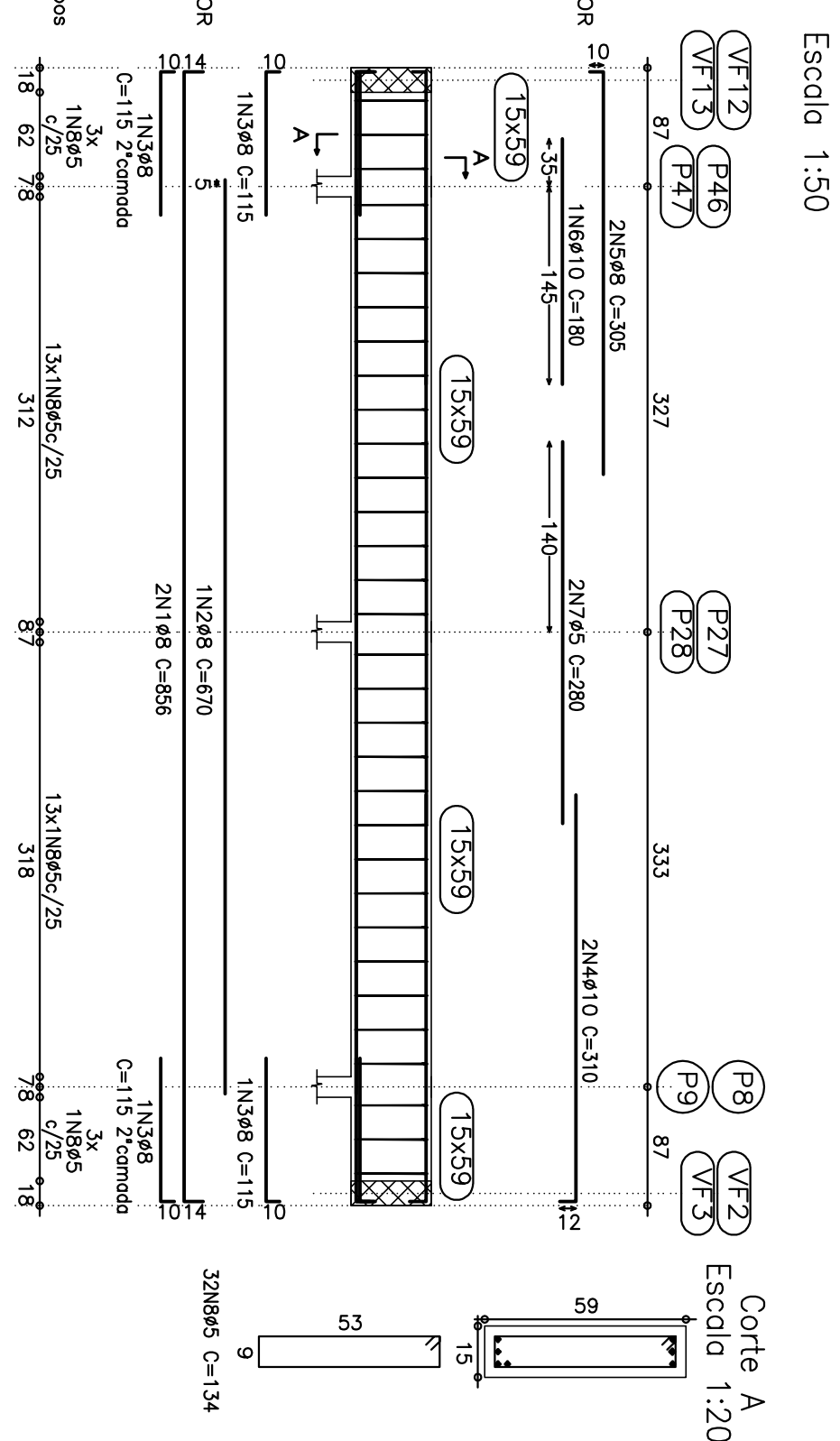
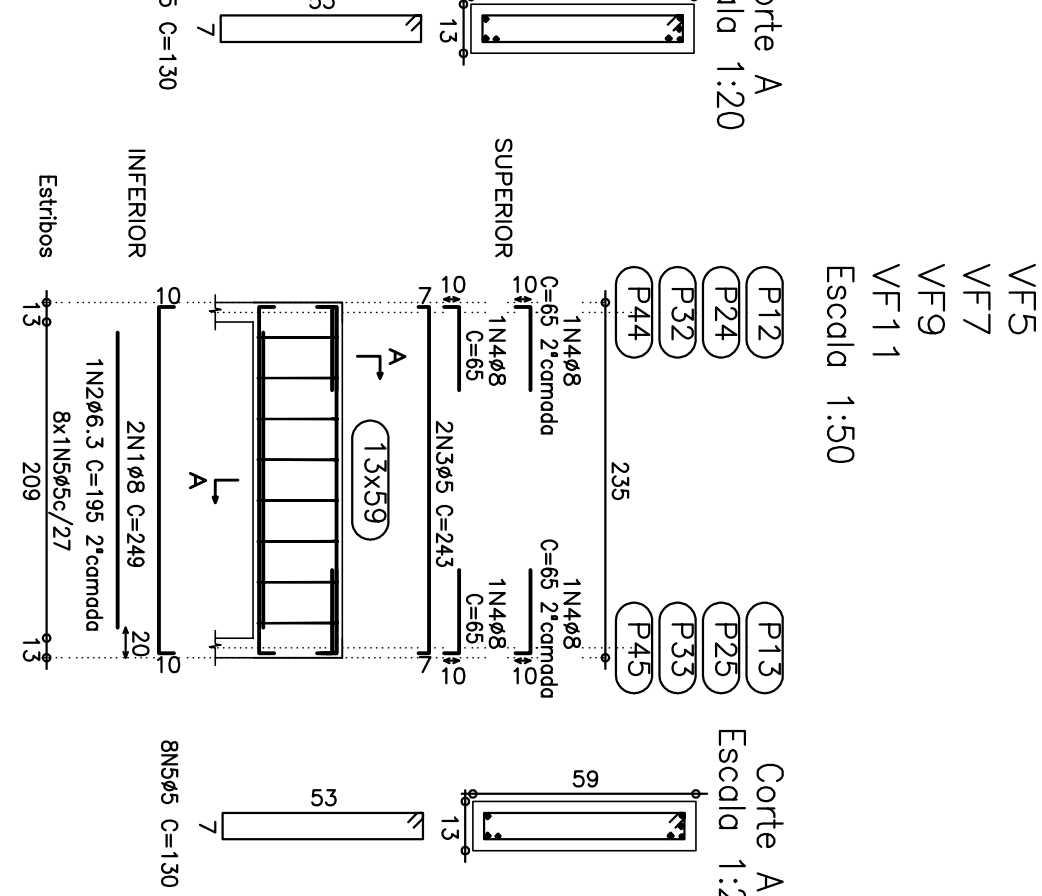
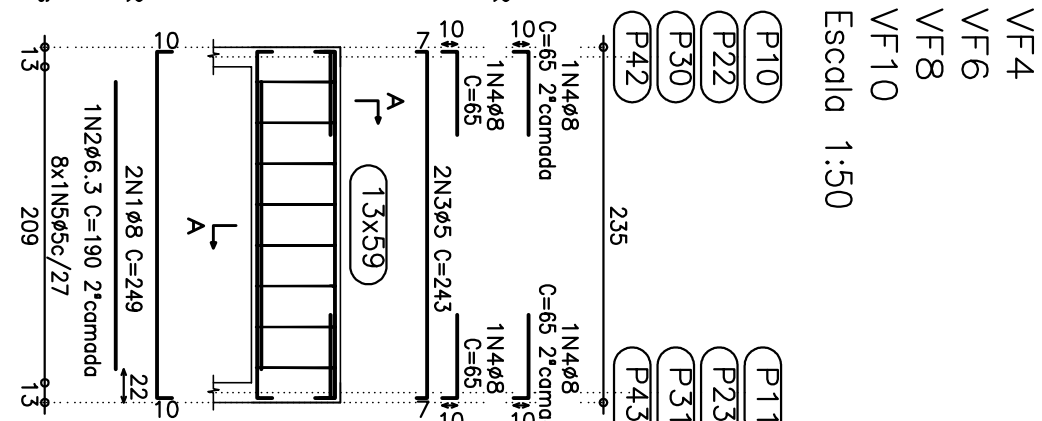
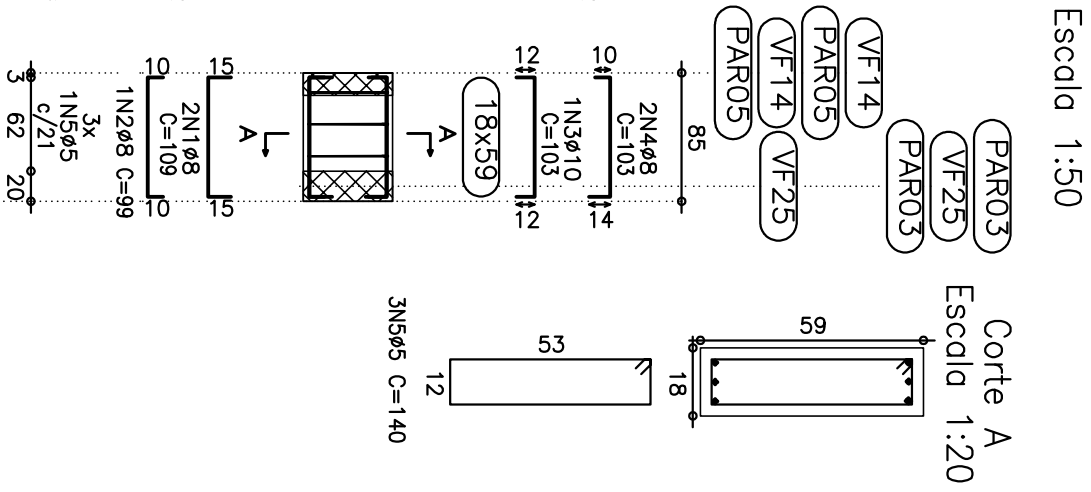
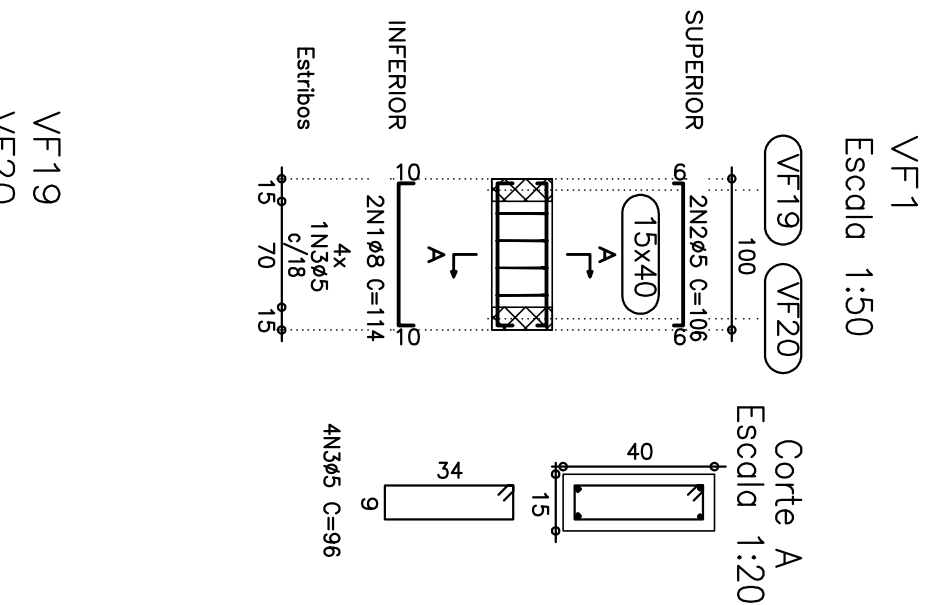


Nota -> 470 m (315,70)
Desenho de vigas
Concreto: C25, armação
Aço CA-50-A e CA-60-B
Escala vigas: 1:20
Escala seções: 1:50



Elemento	Pos.	Diam.	Q.	(cm)	Relat.	Dob.	Comp.	Total	CA-50-A	CA-60-B
VF1	1	Ø8	2	10	94	10	114	228	0,9	
	2	Ø5	2	6	94	6	106	212	0,3	
	3	Ø5	4				96	284	0,8	
	4	Ø8	4	10	55		65	260	1,0	
	5	Ø5	8				130	1040	1,6	
Total+10%:									3,9	10,4
(44)									15,6	
VF2=VF3=VF12 VF13	1	Ø8	2	15	79	15	109	218	0,9	
	2	Ø8	1	12	79	12	103	206	0,8	
	3	Ø10	1	12	79	12	103	206	0,6	
	4	Ø8	2	10	79	14	140	420	0,8	
	5	Ø5	3							
Total+10%:									3,0	0,8
(44)									12,0	3,2
VF4=VF5=VF8=VF10	1	Ø8	2	10	229	10	249	498	2,0	
	2	Ø5	2	7	229	7	243	486	0,5	
	3	Ø5	2	7	229	7	243	486	0,8	
	4	Ø8	4	10	55		65	260	1,0	
	5	Ø5	8				130	1040	1,6	
Total+10%:									3,9	10,4
(44)									15,6	
VF14=VF25	1	Ø8	2	14	828	14	856	1712	6,7	
	2	Ø8	4	10	105		115	460	1,8	
	3	Ø8	2	10	298	12	310	620	3,9	
	4	Ø8	2	10	295		305	610	2,4	
	5	Ø8	1	160			180	180	1,1	
	6	Ø10	1	160			180	180	0,9	
	7	Ø8	1	160			180	180	0,8	
	8	Ø5	32				134	4288	6,7	
Total+10%:									20,4	8,4
(22)									40,8	16,8
VF15=VF16=VF17 VF18=VF21=VF22 VF23=VF24	1	Ø8	2	10	64	10	84	168	0,7	
	2	Ø6,3	1	10	64	64	64	252	0,2	
	3	Ø8	3	10	64	10	84	252	1,0	
	4	Ø5	2				130	280	0,4	
Total+10%:									2,1	0,4
(44)									16,8	3,2
VF19=VF20	1	Ø6,3	2	8	114	8	130	260	0,6	
	2	Ø8	2	10	114	10	134	268	1,1	
	3	Ø5	6				96	576	0,9	
	4	Ø5	2							
	5	Ø5	2							
Total+10%:									1,9	2,0
(22)									3,8	2,0
Ø5:									0,0	47,0
Ø6,3:									84,8	0,0
Ø8:									84,8	0,0
Ø10:									13,8	0,0
Total:									105,6	47,0

LEITOR:

NOTAS

ARTICULAÇÃO:

REVISÕES

NATUREZA DA REVISÃO

DATA

APROVO

COMPANHIA DE DESENVOLVIMENTO DOS VALES DO SÃO FRANCISCO E DO PARANÁ - CODEVASF

PROJETO BÁSICO DO SISTEMA DE ESGOTAMENTO

SANTÁRIO DE CUIRULANDA - BA

ASSINTO

PROJETO ESTRUTURAL - DAF

VIGAS - FORMAS - COMPLEMENTO

MINISTÉRIO DA INTEGRAÇÃO NACIONAL - MIN

ENR

ENR

ENR

ENR

ENR

ENR

ENR

ENR

ENR

ENR

ENR

ENR

ENR

ENR

ENR

ENR

ENR

ENR

ENR

ENR

ENR

ENR

ENR

ENR

ENR

ENR

ENR

ENR

ENR

ENR

ENR

ENR

ENR

ENR

ENR

ENR

ENR

ENR

ENR

ENR

ENR

ENR

ENR

ENR

ENR

ENR

ENR

ENR

ENR

ENR

ENR

ENR

ENR

ENR

ENR

ENR

ENR

ENR

ENR

ENR

ENR

ENR

ENR

ENR

ENR

ENR

ENR

ENR

ENR

ENR

ENR

ENR

ENR

ENR

ENR

ENR

ENR

ENR

ENR

ENR

ENR

ENR

ENR

ENR

ENR

ENR

ENR

ENR

ENR

ENR

ENR

ENR

ENR

ENR

ENR

ENR

ENR

ENR

ENR

ENR

ENR

ENR

ENR

ENR

ENR

ENR

ENR

ENR

ENR

ENR

ENR

ENR

ENR

ENR

ENR

ENR

ENR

ENR

ENR

ENR

ENR

ENR

ENR

ENR

ENR

ENR

ENR

ENR

ENR

ENR

ENR

ENR

ENR

ENR

ENR

ENR

ENR

ENR

ENR

ENR

ENR

ENR

ENR

ENR

ENR

ENR

ENR

ENR

ENR

ENR

ENR

ENR

ENR

ENR

ENR

ENR

ENR

ENR

ENR

ENR

ENR

ENR

ENR

ENR

ENR

ENR

ENR

ENR

ENR

ENR

ENR

ENR

ENR

ENR

ENR

ENR

ENR